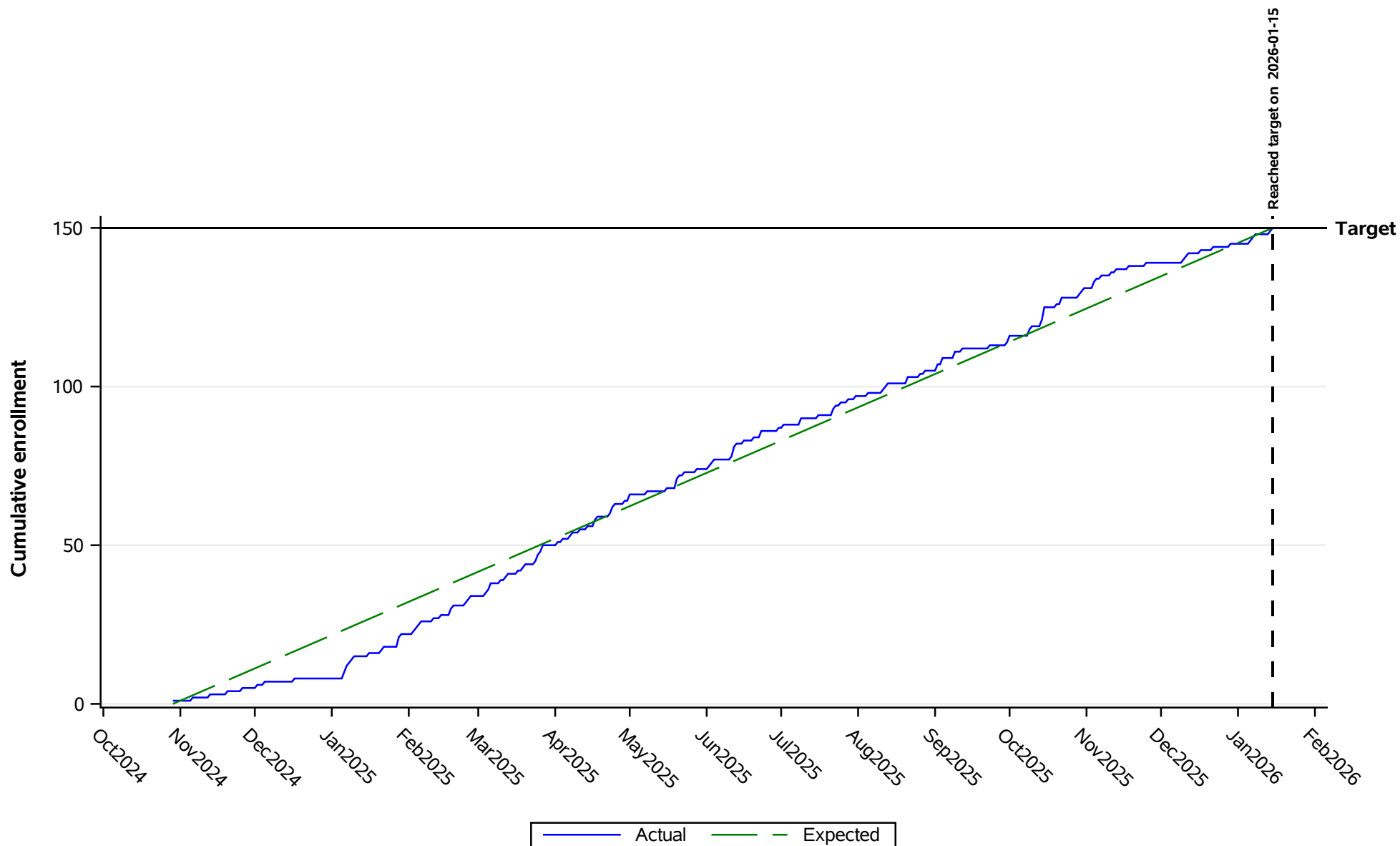


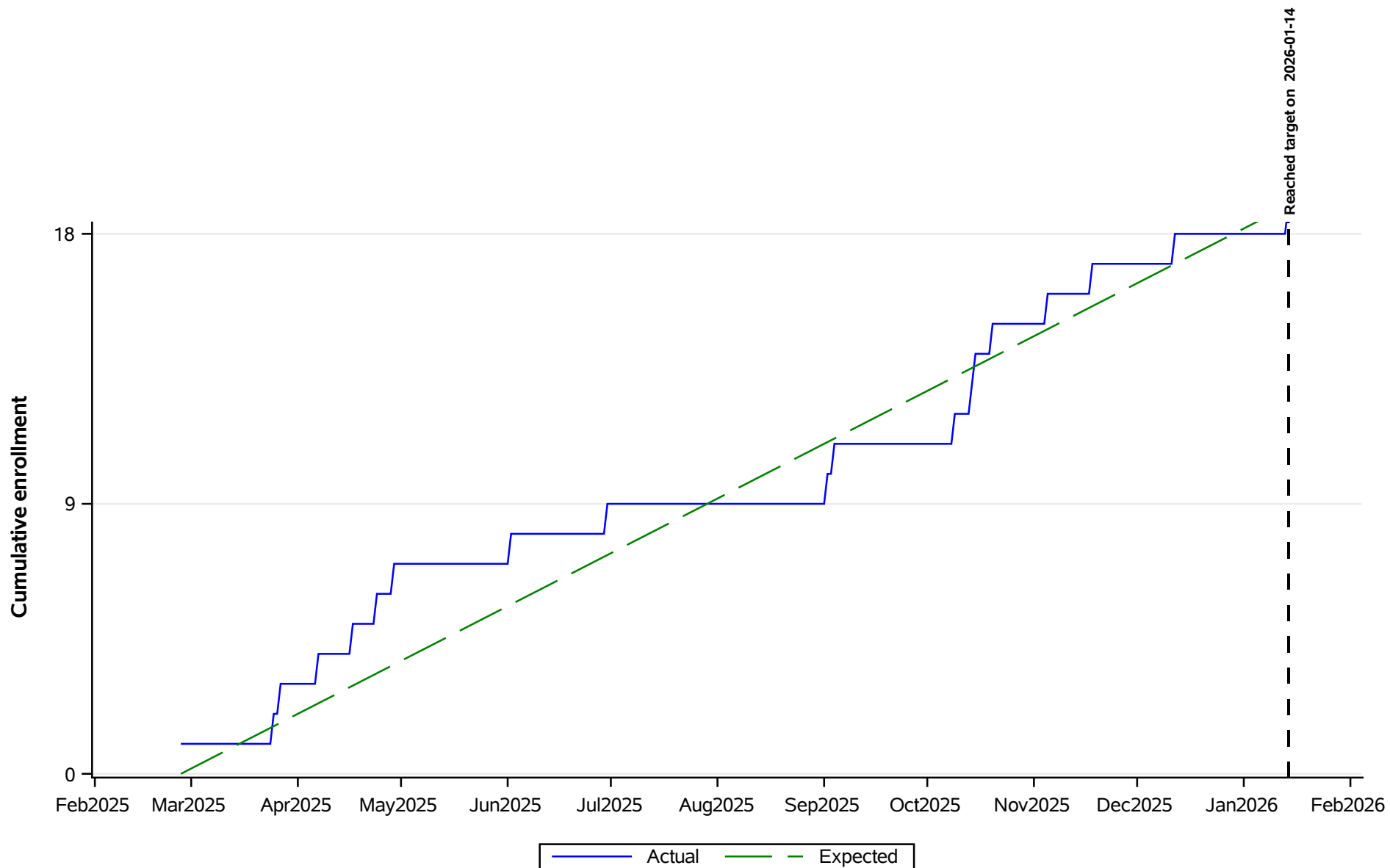
HPTN 106
Cumulative Enrollment – All Sites
Data as of 2026-05-24

Total Expected: 150 Total Enrolled: 150



HPTN 106
Cumulative Enrollment by Site
Data as of 2026-05-24

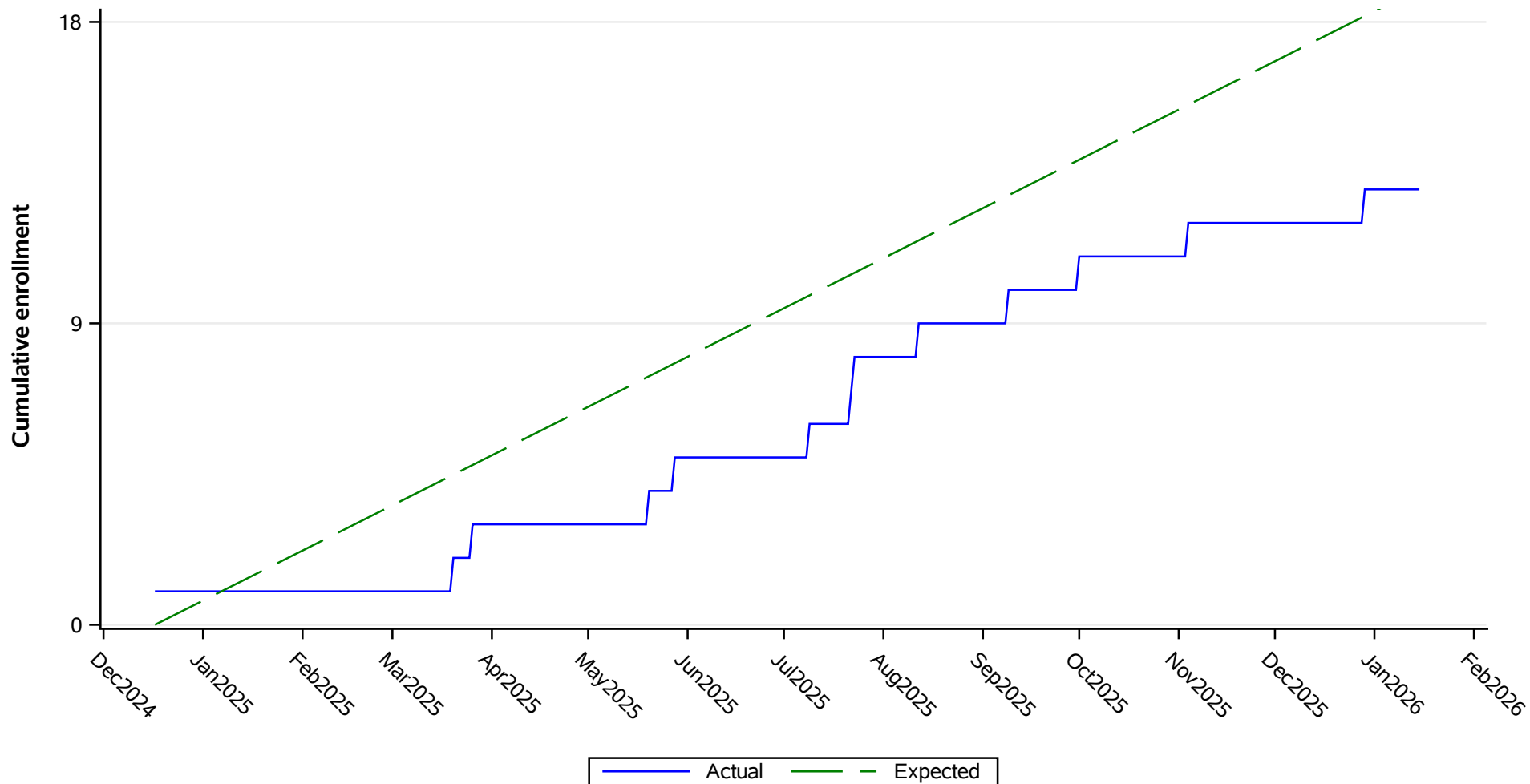
Site: Baltimore
Total Expected: 19 Total Enrolled: 19



SOURCE: SCHARP (opsprog_cron) /trials/hptn/p106/reporting/progress/code/g_enroll.sas (SAS 9.4) 24MAY2026 04:06

HPTN 106
Cumulative Enrollment by Site
Data as of 2026-05-24

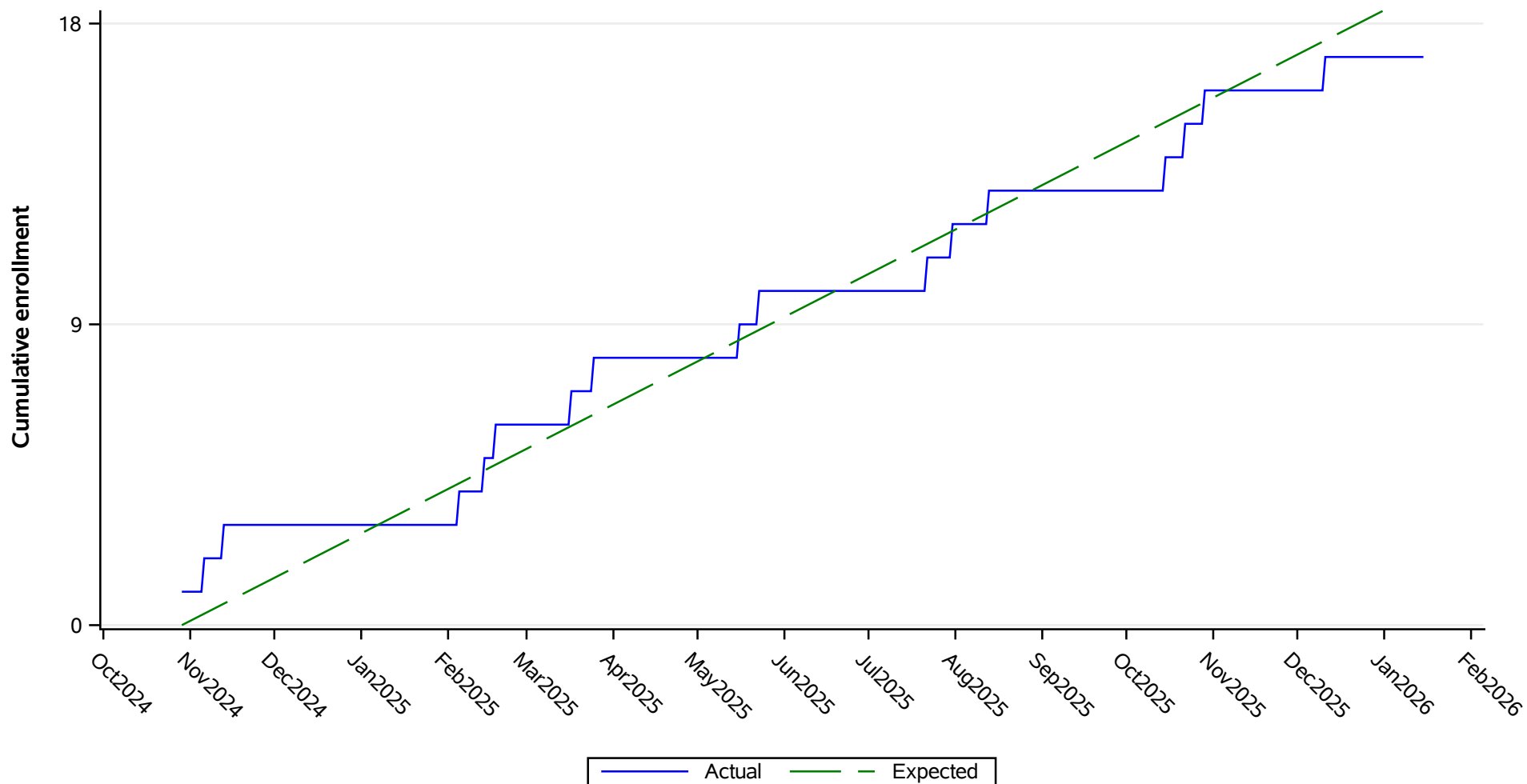
Site: Los Angeles - Care Center
Total Expected: 19 Total Enrolled: 13



SOURCE: SCHARP (opsprog_cron) /trials/hptn/p106/reporting/progress/code/g_enroll.sas (SAS 9.4) 24MAY2026 04:06

HPTN 106
Cumulative Enrollment by Site
Data as of 2026-05-24

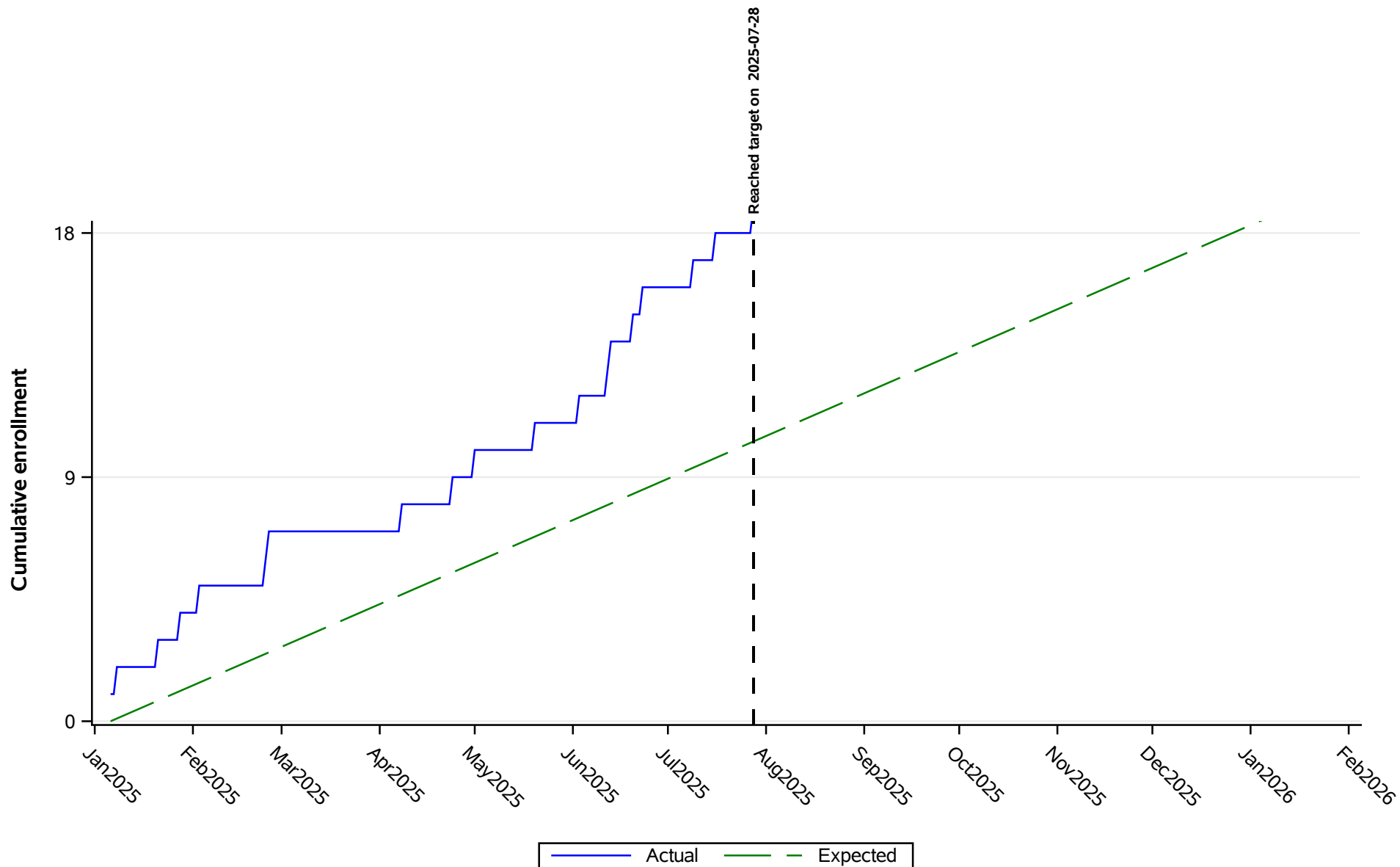
Site: Pittsburgh - U of Pitt
Total Expected: 19 Total Enrolled: 17



SOURCE: SCHARP (opsprog_cron) /trials/hptn/p106/reporting/progress/code/g_enroll.sas (SAS 9.4) 24MAY2026 04:06

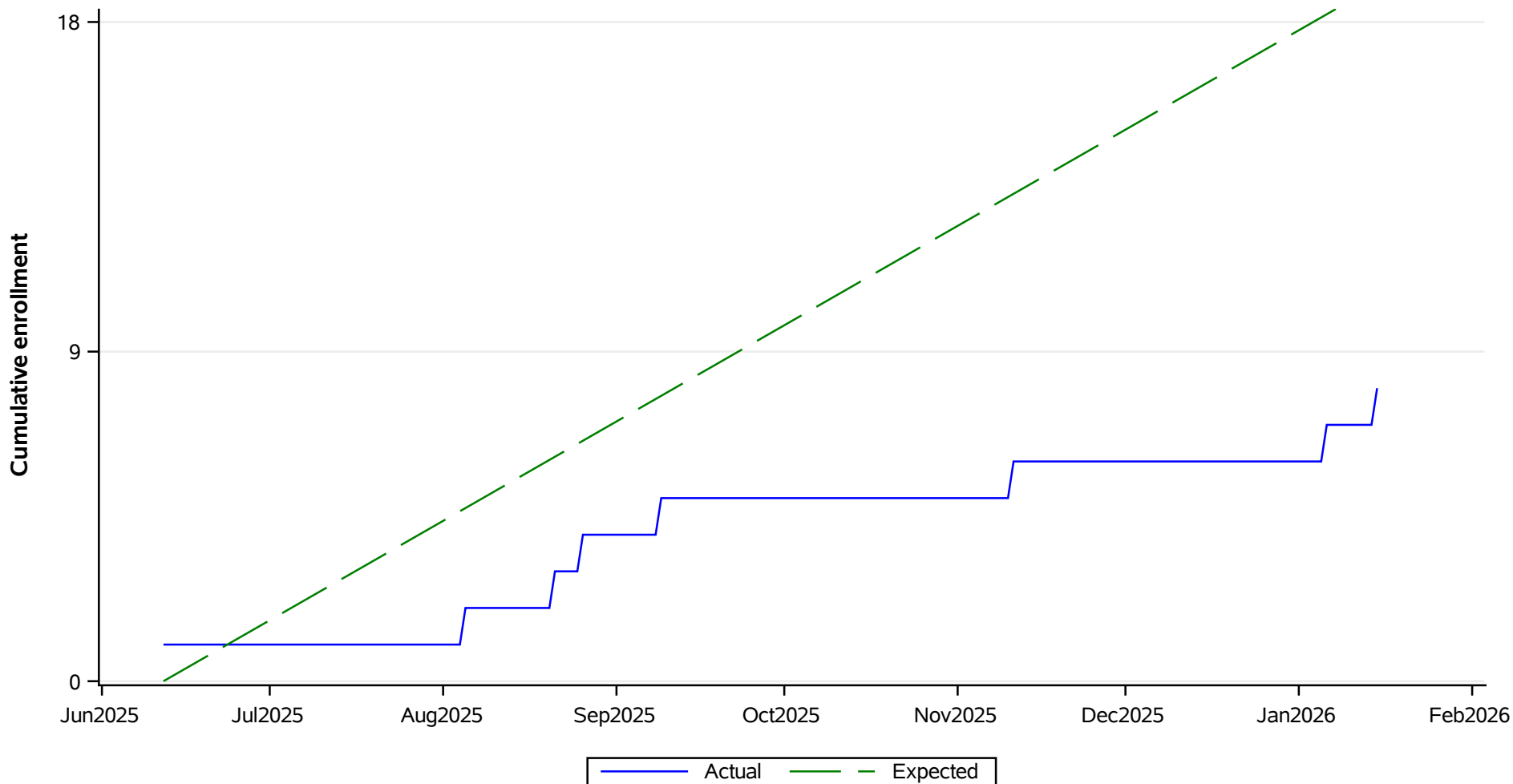
HPTN 106
Cumulative Enrollment by Site
Data as of 2026-05-24

Site: Chapel Hill
Total Expected: 19 Total Enrolled: 28



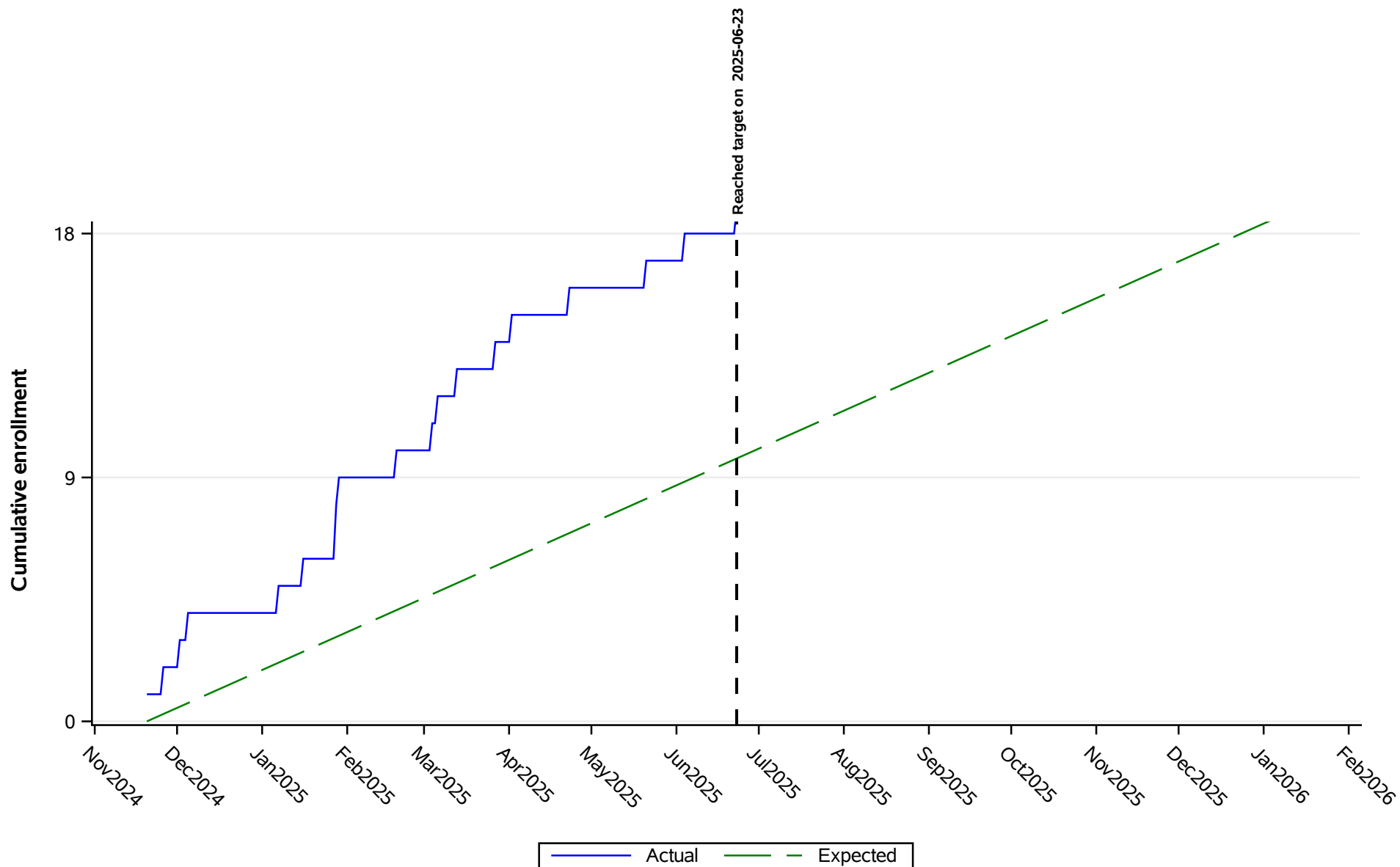
HPTN 106
Cumulative Enrollment by Site
Data as of 2026-05-24

Site: Cornell Clinical Research
Total Expected: 19 Total Enrolled: 8



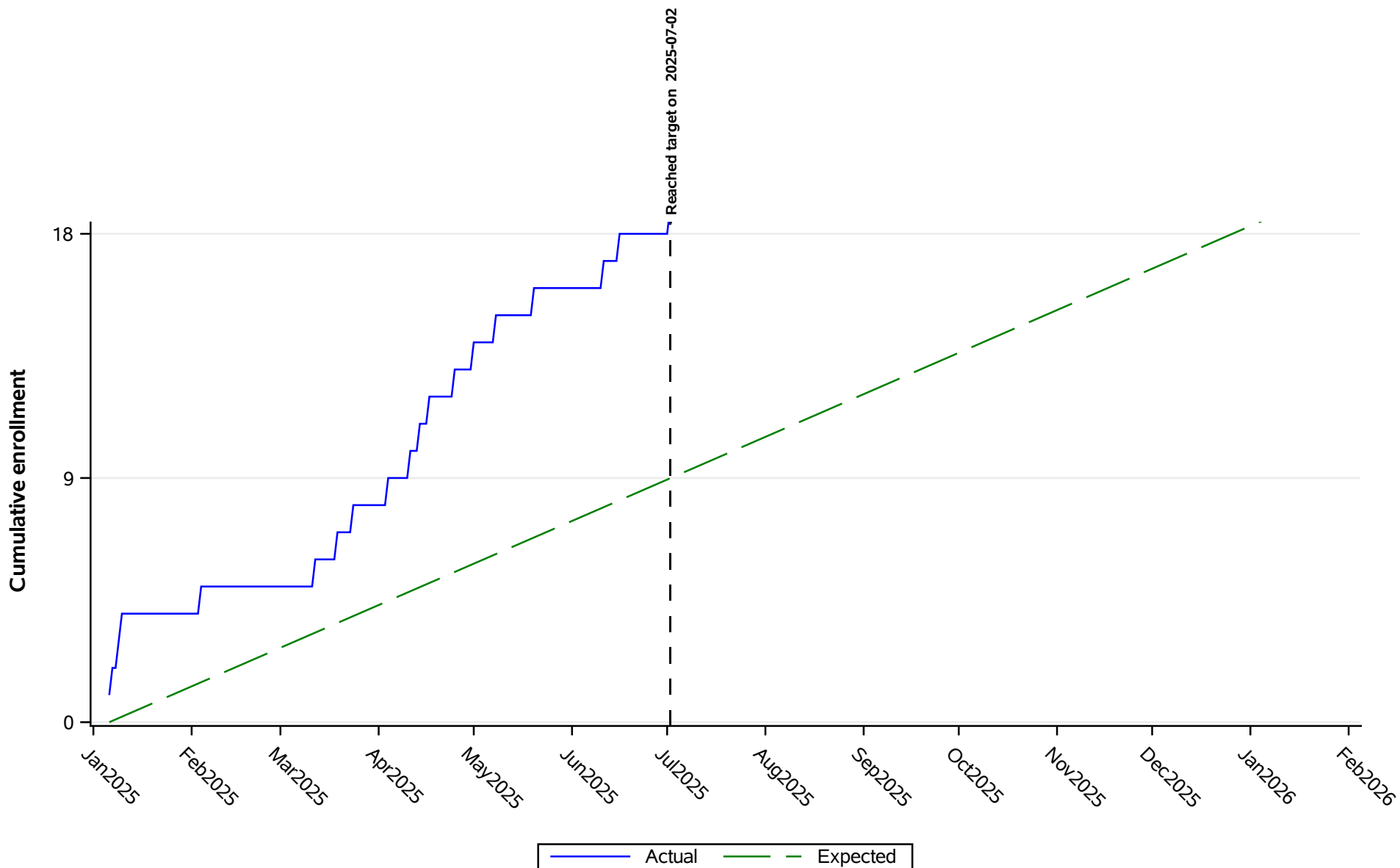
HPTN 106
Cumulative Enrollment by Site
Data as of 2026-05-24

Site: Atlanta - Hope Clinic
Total Expected: 19 Total Enrolled: 22



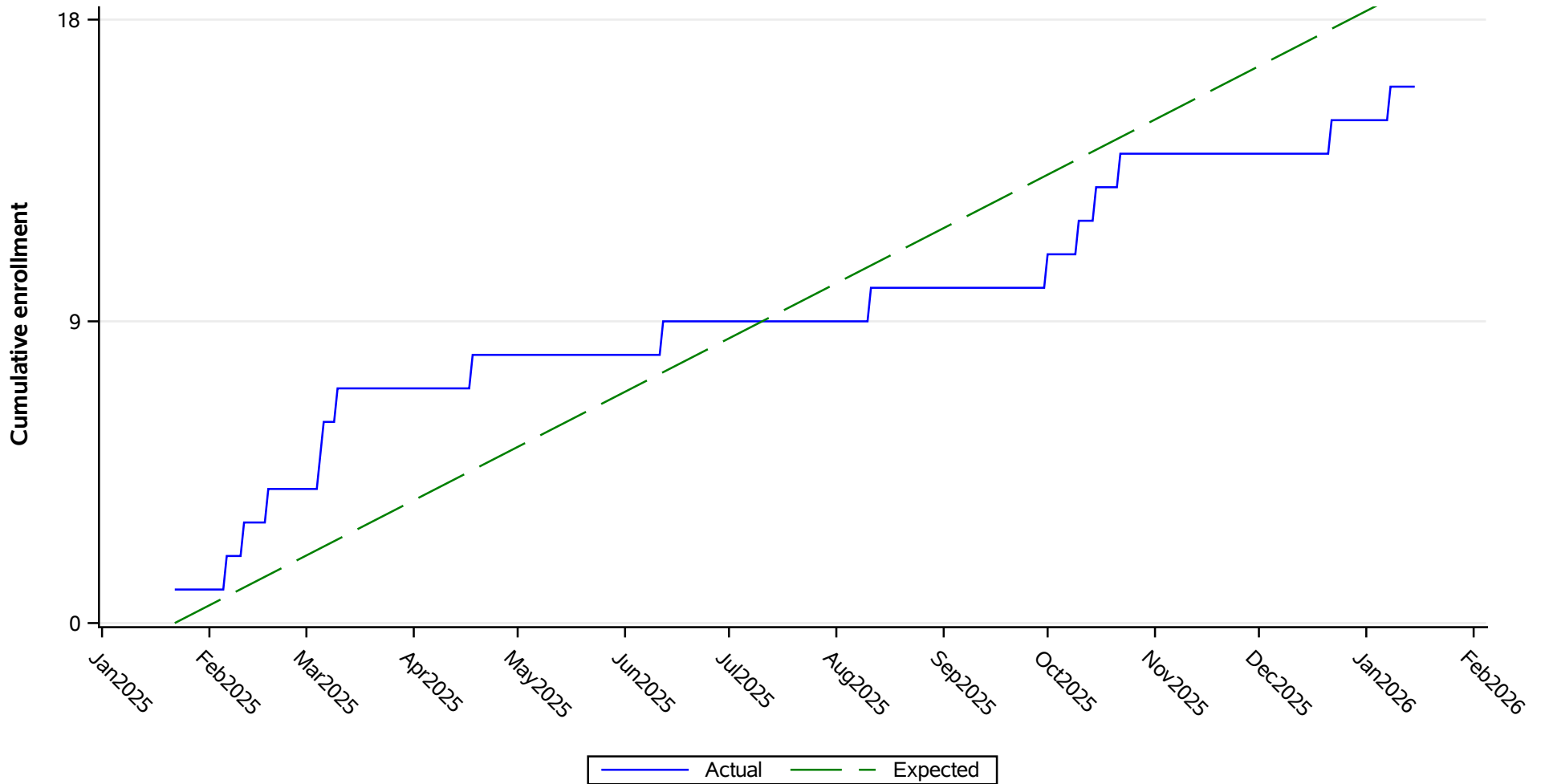
HPTN 106
Cumulative Enrollment by Site
Data as of 2026-05-24

Site: Boston - Fenway
Total Expected: 19 Total Enrolled: 27



HPTN 106
Cumulative Enrollment by Site
Data as of 2026-05-24

Site: Birmingham
Total Expected: 19 Total Enrolled: 16



SOURCE: SCHARP (opsprog_cron) /trials/hptn/p106/reporting/progress/code/g_enroll.sas (SAS 9.4) 24MAY2026 04:06