

HPTN 073 - Pre-Exposure Prophylaxis (PrEP) Initiation and Adherence among Black Men who have Sex with Men (BMSM)
SMC Open Report - February 28, 2014
Visit Cutoff Date: January 15, 2016
Table 12 - Demographics (screened but not enrolled)

	GWU CRS	UCLA CRS	UNC AIDS CRS	Wake County CRS	Total
Age					
<25	10/25 (40.0%)	15/80 (18.8%)	7/13 (53.8%)	0/0 (-%)	32/118 (27.1%)
>=25	15/25 (60.0%)	65/80 (81.3%)	6/13 (46.2%)	0/0 (-%)	86/118 (72.9%)
Self-identified Gender					
Male	25/25 (100.0%)	80/80 (100.0%)	13/13 (100.0%)	0/0 (-%)	118/118 (100.0%)
Ethnicity					
Missing or Declined	0/25 (0.0%)	0/80 (0.0%)	0/13 (0.0%)	0/0 (-%)	0/118 (0.0%)
African American/Black	22/25 (88.0%)	71/80 (88.8%)	13/13 (100.0%)	0/0 (-%)	106/118 (89.8%)
African	0/25 (0.0%)	0/80 (0.0%)	0/13 (0.0%)	0/0 (-%)	0/118 (0.0%)
Afro-Caribbean	0/25 (0.0%)	3/80 (3.8%)	0/13 (0.0%)	0/0 (-%)	3/118 (2.5%)
Afro-Latino	2/25 (8.0%)	4/80 (5.0%)	0/13 (0.0%)	0/0 (-%)	6/118 (5.1%)
Other	1/25 (4.0%)	2/80 (2.5%)	0/13 (0.0%)	0/0 (-%)	3/118 (2.5%)
Highest education level attained					
Missing or Declined	0/25 (0.0%)	0/80 (0.0%)	0/13 (0.0%)	0/0 (-%)	0/118 (0.0%)
8th grade or equivalent or less	0/25 (0.0%)	2/80 (2.5%)	0/13 (0.0%)	0/0 (-%)	2/118 (1.7%)
Some high school	3/25 (12.0%)	12/80 (15.0%)	1/13 (7.7%)	0/0 (-%)	16/118 (13.6%)
High school graduate or equivalent	7/25 (28.0%)	24/80 (30.0%)	2/13 (15.4%)	0/0 (-%)	33/118 (28.0%)
Vocational/trade/technical school	0/25 (0.0%)	4/80 (5.0%)	1/13 (7.7%)	0/0 (-%)	5/118 (4.2%)
Some college	7/25 (28.0%)	26/80 (32.5%)	4/13 (30.8%)	0/0 (-%)	37/118 (31.4%)
AA or other 2 year degree	2/25 (8.0%)	3/80 (3.8%)	2/13 (15.4%)	0/0 (-%)	7/118 (5.9%)
BA/BS degree	4/25 (16.0%)	7/80 (8.8%)	2/13 (15.4%)	0/0 (-%)	13/118 (11.0%)
Masters or other advanced degree	2/25 (8.0%)	2/80 (2.5%)	1/13 (7.7%)	0/0 (-%)	5/118 (4.2%)
Employment status					
Missing or Declined	0/25 (0.0%)	0/80 (0.0%)	0/13 (0.0%)	0/0 (-%)	0/118 (0.0%)
Employed full-time	15/25 (60.0%)	7/80 (8.8%)	6/13 (46.2%)	0/0 (-%)	28/118 (23.7%)
Employed part-time	3/25 (12.0%)	11/80 (13.8%)	5/13 (38.5%)	0/0 (-%)	19/118 (16.1%)
Self-employed	0/25 (0.0%)	3/80 (3.8%)	0/13 (0.0%)	0/0 (-%)	3/118 (2.5%)
Unemployed or between jobs	7/25 (28.0%)	47/80 (58.8%)	1/13 (7.7%)	0/0 (-%)	55/118 (46.6%)
On disability	0/25 (0.0%)	7/80 (8.8%)	1/13 (7.7%)	0/0 (-%)	8/118 (6.8%)
Other, specify	0/25 (0.0%)	5/80 (6.3%)	0/13 (0.0%)	0/0 (-%)	5/118 (4.2%)

HPTN 073 - Pre-Exposure Prophylaxis (PrEP) Initiation and Adherence among Black Men who have Sex with Men (BMSM)
SMC Open Report - February 28, 2014
Visit Cutoff Date: January 15, 2016
Table 12 - Demographics (screened but not enrolled)

	GWU CRS	UCLA CRS	UNC AIDS CRS	Wake County CRS	Total
Annual income					
Missing or Declined	0/25 (0.0%)	0/80 (0.0%)	0/13 (0.0%)	0/0 (-%)	0/118 (0.0%)
Less than \$5,000	1/25 (4.0%)	39/80 (48.8%)	2/13 (15.4%)	0/0 (-%)	42/118 (35.6%)
\$5,000-\$9,999	1/25 (4.0%)	12/80 (15.0%)	1/13 (7.7%)	0/0 (-%)	14/118 (11.9%)
\$10,000-\$19,999	3/25 (12.0%)	12/80 (15.0%)	4/13 (30.8%)	0/0 (-%)	19/118 (16.1%)
\$20,000-\$29,999	8/25 (32.0%)	8/80 (10.0%)	3/13 (23.1%)	0/0 (-%)	19/118 (16.1%)
\$30,000-\$39,999	4/25 (16.0%)	4/80 (5.0%)	1/13 (7.7%)	0/0 (-%)	9/118 (7.6%)
\$40,000-\$49,999	1/25 (4.0%)	0/80 (0.0%)	0/13 (0.0%)	0/0 (-%)	1/118 (0.8%)
\$50,000-\$59,999	2/25 (8.0%)	2/80 (2.5%)	0/13 (0.0%)	0/0 (-%)	4/118 (3.4%)
\$60,000-\$69,999	1/25 (4.0%)	1/80 (1.3%)	0/13 (0.0%)	0/0 (-%)	2/118 (1.7%)
\$70,000-\$79,999	1/25 (4.0%)	1/80 (1.3%)	1/13 (7.7%)	0/0 (-%)	3/118 (2.5%)
\$80,000 or more	3/25 (12.0%)	1/80 (1.3%)	1/13 (7.7%)	0/0 (-%)	5/118 (4.2%)
Healthcare Coverage					
Missing or Declined	0/25 (0.0%)	0/80 (0.0%)	0/13 (0.0%)	0/0 (-%)	0/118 (0.0%)
Yes	21/25 (84.0%)	54/80 (67.5%)	9/13 (69.2%)	0/0 (-%)	84/118 (71.2%)
No	4/25 (16.0%)	26/80 (32.5%)	4/13 (30.8%)	0/0 (-%)	34/118 (28.8%)
Marital Status					
Missing or Declined	0/25 (0.0%)	0/80 (0.0%)	0/13 (0.0%)	0/0 (-%)	0/118 (0.0%)
Married/civil union/legal partnership	1/25 (4.0%)	3/80 (3.8%)	0/13 (0.0%)	0/0 (-%)	4/118 (3.4%)
Living with primary or main partner	3/25 (12.0%)	4/80 (5.0%)	2/13 (15.4%)	0/0 (-%)	9/118 (7.6%)
Have primary or main partner, not living	6/25 (24.0%)	3/80 (3.8%)	0/13 (0.0%)	0/0 (-%)	9/118 (7.6%)
Not living with primary partner	15/25 (60.0%)	70/80 (87.5%)	11/13 (84.6%)	0/0 (-%)	96/118 (81.4%)
Gender of spouse					
Missing or Declined	0/10 (0.0%)	0/10 (0.0%)	0/2 (0.0%)	0/0 (-%)	0/22 (0.0%)
Male	8/10 (80.0%)	6/10 (60.0%)	2/2 (100.0%)	0/0 (-%)	16/22 (72.7%)
Female	2/10 (20.0%)	4/10 (40.0%)	0/2 (0.0%)	0/0 (-%)	6/22 (27.3%)
Transgender	0/10 (0.0%)	0/10 (0.0%)	0/2 (0.0%)	0/0 (-%)	0/22 (0.0%)
Other, specify	0/10 (0.0%)	0/10 (0.0%)	0/2 (0.0%)	0/0 (-%)	0/22 (0.0%)

HPTN 073 - Pre-Exposure Prophylaxis (PrEP) Initiation and Adherence among Black Men who have Sex with Men (BMSM)
SMC Open Report - February 28, 2014
Visit Cutoff Date: January 15, 2016
Table 7 - PrEP Initiation

	GWU CRS	UCLA CRS	UNC AIDS CRS	Wake County CRS	Total
N enrolled	75	76	72	3	226
N on PrEP ²	59/75 (78.7%)	50/76 (65.8%)	64/72 (88.9%)	3/3 (100.0%)	176/226 (77.9%)
Time until on PrEP in days					
Range	[0, 69]	[0, 100]	[0, 291]	[0, 40]	[0, 291]
IQR	[0, 1]	[1, 10]	[0, 4]	[0, 40]	[0, 4]
Median	1	3	1	0	1

¹At enrollment, participants responded to the question "which of the following describes your current feelings about starting PrEP?" Those that selected something other than "I am not thinking about taking PrEP at this time" are classified as considering PrEP.

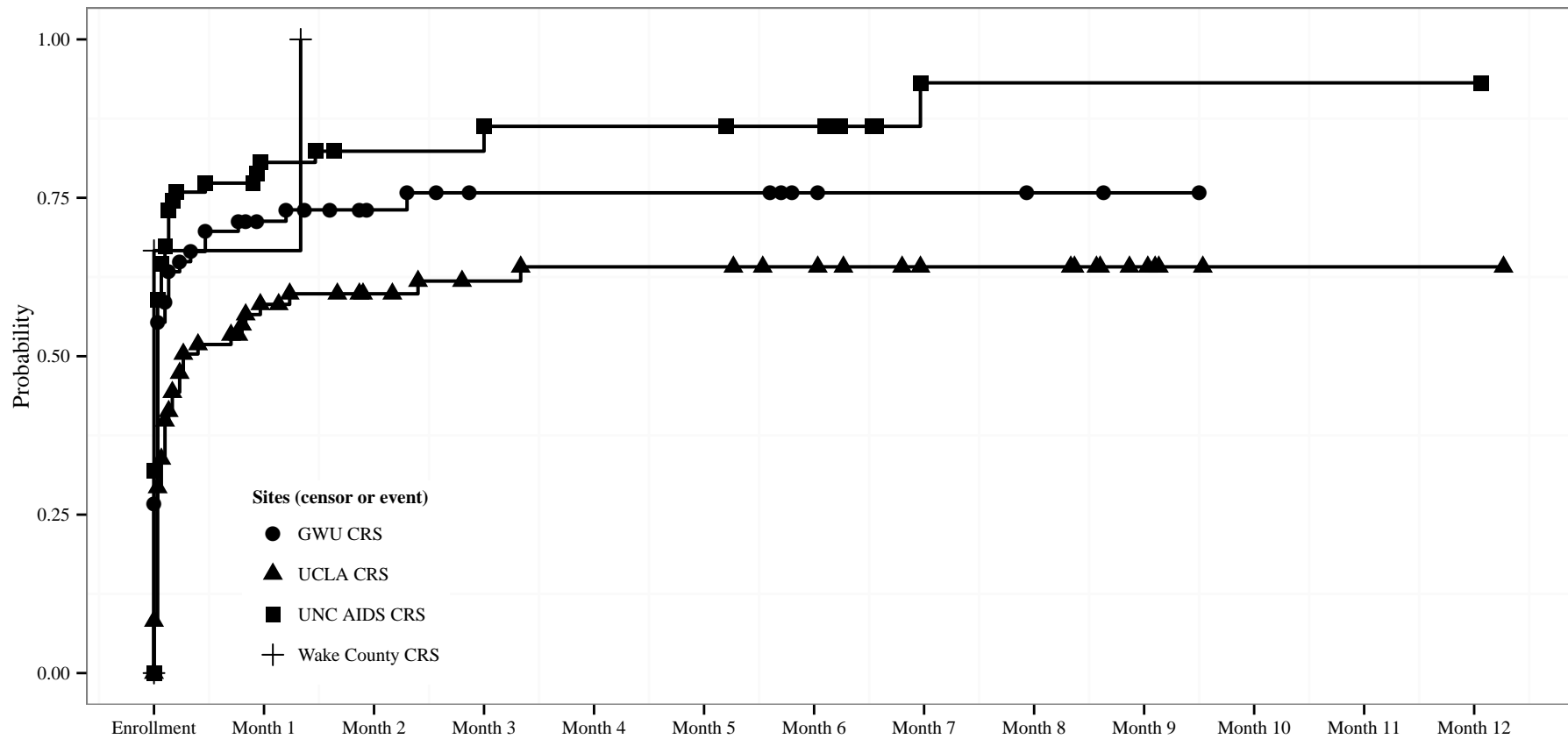
²Participants On PrEP have had their date of first dose confirmed by the sites.

HPTN 073 – Pre-Exposure Prophylaxis (PrEP) Initiation and Adherence among Black Men who have Sex with Men (BMSM) in Three U.S. Cities

SMC Open Report – 28 February 2014

Visit Cutoff Date: 15 January 2016

Figure 4 – Cumulative Probability of Prep Initiation



GWU CRS	75 (20)	16 (48)	10 (49)	7 (50)	7 (50)	7 (50)	4 (50)	3 (50)	2 (50)	1 (50)	0 (50)	0 (50)	0 (50)
UCLA CRS	73 (6)	26 (39)	21 (40)	17 (41)	16 (42)	16 (42)	14 (42)	10 (42)	10 (42)	5 (42)	1 (42)	1 (42)	1 (42)
UNC AIDS CRS	72 (23)	11 (57)	9 (58)	9 (60)	7 (60)	7 (60)	6 (60)	1 (61)	1 (61)	1 (61)	1 (61)	1 (61)	1 (61)
Wake County CRS	3 (2)	1 (2)	0 (3)	0 (3)	0 (3)	0 (3)	0 (3)	0 (3)	0 (3)	0 (3)	0 (3)	0 (3)	0 (3)

Participants at risk (Participants on PrEP)

HPTN 073 - Pre-Exposure Prophylaxis (PrEP) Initiation and Adherence among Black Men who have Sex with Men (BMSM)
SMC Open Report - February 28, 2014
Visit Cutoff Date: January 15, 2016
Table 14 - Client-centered Care Coordination Usage

	GWU CRS	UCLA CRS	UNC AIDS CRS	Wake County CRS	Total
N Enrolled	75	76	72	3	226
N C4 encounters	471	309	155	9	944
At least 1 C4 encounter	75/75 (100.0%)	71/76 (93.4%)	66/72 (91.7%)	3/3 (100.0%)	215/226 (95.1%)
On PrEP	66/75 (88.0%)	63/76 (82.9%)	65/72 (90.3%)	3/3 (100.0%)	197/226 (87.2%)
N C4 encounters	418	280	146	9	853
At least 1 C4 encounter	66/66 (100.0%)	61/63 (96.8%)	61/65 (93.8%)	3/3 (100.0%)	191/197 (97.0%)
C4 encounter per PrEP user	6.33	4.59	2.39	3.00	4.47
Avg. encounter length: Mean (95% CI)	35.9 (33.5,38.3)	35.9 (32.8,39.0)	23.4 (18.2,28.5)	23.3 (-5.4,52.0)	31.7 (29.5,33.9)
Not on PrEP	9/75 (12.0%)	13/76 (17.1%)	7/72 (9.7%)	0/3 (0.0%)	29/226 (12.8%)
N C4 encounters	53	29	9	0	91
At least 1 C4 encounter	9/9 (100.0%)	10/13 (76.9%)	5/7 (71.4%)	0/0 (-%)	24/29 (82.8%)
C4 encounters per PrEP non-user	5.89	2.90	1.80	0.00	3.79
Avg. encounter length: Mean (95% CI)	36.7 (30.6,42.7)	25.5 (15.7,35.3)	17.0 (7.58,26.4)		27.9 (22.5,33.3)